

LED FIXTURE

RIGID Series

LED Wall Sconce

RGD-WS

2 Ring LED Wall Sconce



Features & Benefits

Energy Star and cETL rated

Alumimium frame, great lighting distribution without any shadow

White PMMA lens

15W 1,100lm, 120V 60 Hz Input, PF>0.9

TRIAC (10-100%)dimmable

High CRI (80+)

L70@ 50,000 Hrs

Damp location approved, meets ADA requirements

Warranty

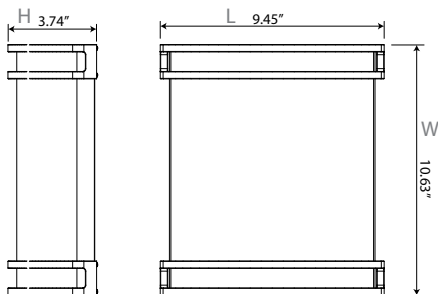
5-year limited warranty in commercial use from the date of purchase

Operating temperature range between -20°C and +40°C

Applications

Ideal replacement for traditional incandescent wall mount fixture.
Restaurant, Community, Office, Retail, Hospitality and etc.

Dimensional drawing



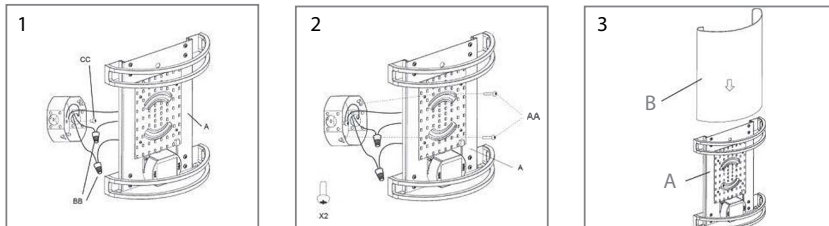
Ordering Information Example: RGD-WS/15W/30/D/2R

Family Name	Fixture Type	Wattage	CCT (Kelvin)	Dimmable	Type
RGD (Rigid)	WS (Wall Sconce)	15W	30 (3000K) 40 (4000K)	D (Dimmable)	2R (2 Ring)

Product Specification

Ordering Code	Energy Star	Model Number	Description	Wattage (W)	Input Voltage (V)	Hour Rating	Initial Delivered Lumens (lumen)	CCT (K)	CRI	Damp Location	M.O.D. L×W×H (inch)
3663125	Y	RGD-WS/15W/30/D/2R	2 Ring LED Wall Sconce 15W 3000K Dimmable	15	120	50,000	1,100	3000	80+	Y	9.45×10.63×3.74
3663126	Y	RGD-WS/15W/40/D/2R	2 Ring LED Wall Sconce 15W 4000K Dimmable	15	120	50,000	1,100	4000	80+	Y	9.45×10.63×3.74

Installation



1. Connect the fixture wires accordingly.
2. Put the long screws through the keyholes, and thread into the J-box.
3. Align the tabs on fixture pan(A) with the channels on lens(B), then insert lens(B) into fixture pan(A).