

| | | | |
|------|--|-------------|--|
| Date | | Project | |
| Type | | Part Number | |



ALL-IN-ONE PERFORMANCE LIGHTING

MAKO Series

VAPOR TIGHT FIXTURE with MICROWAVE SENSOR

The MAKO Series is designed for durability and high performance. Housed in a rugged polycarbonate body with a silicon perimeter gasket, this fixture is built to withstand harsh environments. Engineered to deliver powerful, energy-efficient lighting, this fixture offers an IP66 protection rating, ensuring it is dust-tight and resistant to powerful water jets, making it ideal for both indoor and outdoor industrial settings. Whether you're lighting up warehouses, factories, or outdoor spaces, this vapor tight strip provides reliable, long-lasting illumination even in the most demanding environments.



PRODUCT FEATURES

- DLC Premium
- One-piece polycarbonate housing body and frosted polycarbonate lens
- Integrated Microwave Sensor
- Factory Default Sensor Settings: Dim to 30% after 5 mins no motion. Remains until Motion Detected
- Remote needed to configure settings outside of factory default range
- Surface & Suspended Mounting options via supplied clamps inside the fixture body
- Operating temperature: -40°F to +122°F (-40°C to +50°C)
- IP66 Rated for Wet Location
- Rated Lifespan: L70 ~100,000 hrs
- 10 year limited warranty

KEY SPECIFICATIONS

| | |
|---------------------|--|
| Voltage | 120-347V |
| Wattage | Selectable Wattages R1 - 25/35/45W R2 - 50/60/66W |
| Length | 4FT |
| Power Factor | >0.9 |
| CCT | 3500K, 4000K, 5000K |
| CRI | >80 |
| Lumens | 3,484 – 8,962 lm |
| Beam Angle | 120° |
| Dimming | 0-10V |
| Mounting | Surface & Suspended |
| Applications | Commercial, Warehouse, Food Processing Facilities |


 EMERGENCY
 BACKUP READY

 RENO SMART
 NLC SYSTEM


SPECIFICATIONS – R1 4FT MULTI POWER (25/35/45W)

| Order# | Model | Wattage | Voltage | Lumens | Efficacy | CCT |
|--------|----------------------------|---------|----------|----------|----------|-------|
| R33114 | RENO-LVP4-DV-MW-MCCT-R1-MS | 25W | 120-347V | 3,484 lm | 139 lm/W | 3500K |
| | | | | 3,565 lm | 143 lm/W | 4000K |
| | | | | 3,569 lm | 143 lm/W | 5000K |
| | | 35W | 120-347V | 4,732 lm | 135 lm/W | 3500K |
| | | | | 4,842 lm | 138 lm/W | 4000K |
| | | | | 4,787 lm | 137 lm/W | 5000K |
| | | 45W | 120-347V | 5,966 lm | 133 lm/W | 3500K |
| | | | | 6,141 lm | 137 lm/W | 4000K |
| | | | | 5,967 lm | 133 lm/W | 5000K |

SPECIFICATIONS – R2 4FT MULTI POWER (50/60/66W)

| Order# | Model | Wattage | Voltage | Lumens | Efficacy | CCT |
|--------|----------------------------|---------|----------|----------|----------|-------|
| R33115 | RENO-LVP4-DV-MW-MCCT-R2-MS | 50W | 120-347V | 6,881 lm | 138 lm/W | 3500K |
| | | | | 7,037 lm | 141 lm/W | 4000K |
| | | | | 7,004 lm | 140 lm/W | 5000K |
| | | 60W | 120-347V | 8,095 lm | 135 lm/W | 3500K |
| | | | | 8,272 lm | 138 lm/W | 4000K |
| | | | | 8,292 lm | 138 lm/W | 5000K |
| | | 66W | 120-347V | 8,602 lm | 130 lm/W | 3500K |
| | | | | 8,962 lm | 136 lm/W | 4000K |
| | | | | 8,741 lm | 132 lm/W | 5000K |

DLC CERTIFICATION

| Order# | Model | Application | DLC Standard | DLC Premium |
|--------|----------------------------|----------------------------------|--------------|-------------|
| R33114 | RENO-LVP4-DV-MW-MCCT-R1-MS | Direct Linear Ambient Luminaires | P3K183AC | – |
| | | Low-Bay Luminaires | P3ULFMHT | – |
| | | Stairwell and Passageway | – | S-EWZIUY |
| R33115 | RENO-LVP4-DV-MW-MCCT-R2-MS | Direct Linear Ambient Luminaires | P6DUXD36 | – |
| | | Low-Bay Luminaires | PA3MAC1C | – |
| | | Stairwell and Passageway | – | S-8P3ZJS |

ACCESSORIES - MOUNTING



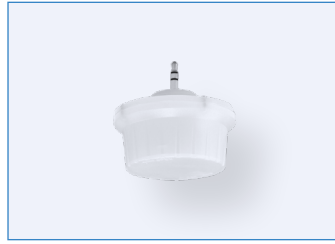
R39204
RENO-RP
Aircraft Suspension Cables

| Order# | Model | Description |
|--------|---------|----------------------------|
| R39204 | RENO-RP | Aircraft Suspension Cables |

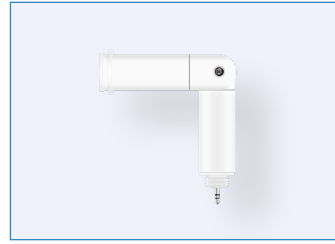
ACCESSORIES – RENO SMART NLC SENSORS



R75001
RENO-RS-JK-BPDN-12V
Bluetooth 3.5mm Jack PIR
Sensor for RENO Smart NLC
System



R75002
RENO-RS-JK-BMWM-12V
Bluetooth 3.5mm Jack
Microwave Sensor for RENO
Smart NLC System



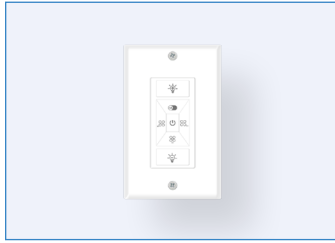
R75102
RENO-RS-JK-AD-L
Adjustable "L" Angle Adaptor
for 3.5mm Jack Sensors



R75201
RENO-RS-GW-BCNW
Ceiling Mounted Gateway for
RENO Smart NLC System



R75301
RENO-RS-RC-BNNN
5-Key Reset Remote Controller

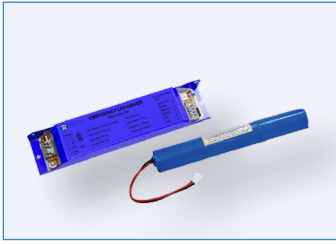


R75302
RENO-RS-RC-BNNG
Ceiling Mounted Gateway for
RENO Smart NLC System

| Order# | Model | Description |
|---------|---------------------|--|
| R75001 | RENO-RS-JK-BPDN-12V | Bluetooth 3.5mm Jack PIR Sensor (*Requires R75102) |
| R75002 | RENO-RS-JK-BMWM-12V | Bluetooth 3.5mm Jack Microwave Sensor (*Requires R75102) |
| R75102* | RENO-RS-JK-AD-L | Adjustable "L" Angle Adaptor for 3.5mm Jack Sensors |
| R75201 | RENO-RS-GW-BCNW | Ceiling Mounted Gateway for RENO Smart NLC System |
| R75301 | RENO-RS-RC-BNNN | 5-Key Reset Remote Controller |
| R75302 | RENO-RS-RC-BNNG | 7-Key Smart Wall Switch for RENO Smart NLC System |

****All Reno Smart Sensors are programmed/commissioned using our Reno Smart App**

ACCESSORIES – EMERGENCY LED DRIVERS



R83004
RENO-EM-C08
Internal Mount Emergency LED
Driver (100-347V AC, 50-60Hz, 8W)

| Order# | Model | Description |
|--------|-------------|--|
| R83004 | RENO-EM-C08 | Internal Mount Emergency LED Driver (100-347V AC, 50-60Hz, 8W) |

ACCESSORIES – STANDALONE SENSOR & REMOTES



R74004
RENO-SENSOR-PIR3.5-PH15M
Long Detection Range PIR
Sensor



R75103
RENO-RS-JK-AD-CORD-L
Adjustable 3.5mm Jack to
Hardwire "L" Angle Adaptor



R73002
RENO-REMOTE-H
Remote Control for Standalone
Sensors (With Screen)

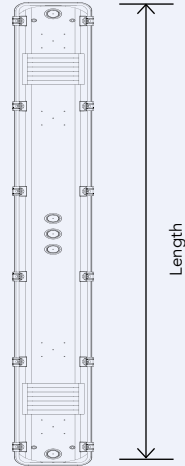
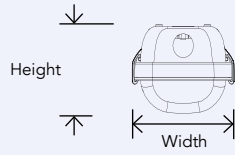


R73005
RENO-REMOTE-H-ECO
Remote Control for Standalone
sensors (Without Screen)

| Order# | Model | Description |
|--------|--------------------------|--|
| R74004 | RENO-SENSOR-PIR3.5-PH15M | Long Detection Range PIR Sensor for installations over 17ft. (Must be used with R75103) |
| R75103 | RENO-RS-JK-AD-CORD-L | Adjustable 3.5mm Jack to Hardwire " L " Angle Adaptor |
| R73002 | RENO-REMOTE-H | Remote Control for Standalone Sensors (With Screen) Note: Only 1 needed per project. |
| R73005 | RENO-REMOTE-H-ECO | Remote Control for Standalone sensors (Without Screen) Note: Only 1 needed per project |

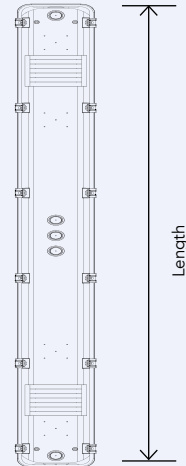
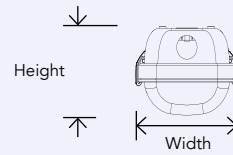
DIMENSIONS

R1



Width: 4.8" (121.9 mm)
 Height: 3.7" (94 mm)
 Length: 47.3" (1201.4 mm)
 Weight: 4 lbs (1.81 kg)

R2



Width: 4.8" (121.9 mm)
 Height: 3.7" (94 mm)
 Length: 47.3" (1201.4 mm)
 Weight: 4 lbs (1.81 kg)