

# LED Table Lamp

**TL46615**  
INSTALLATION SHEET

## START FROM HERE

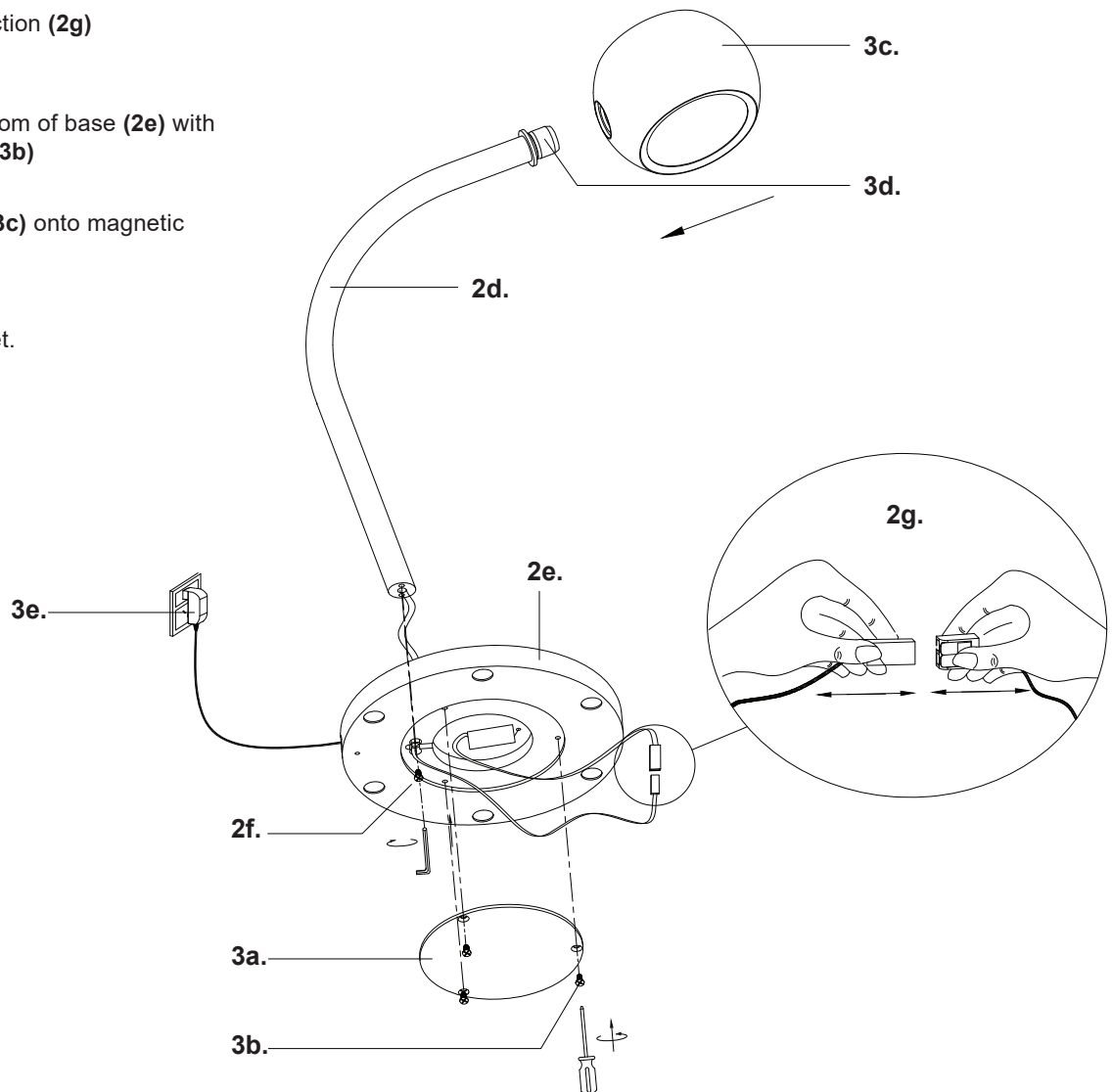
- Prepare everything in a clear area
- Wear gloves at all times during this installation
- Read instructions carefully before you start assembly
- Keep this installation sheet for future reference

### Please Note:

- This Kuzco LED fixture comes with pre-wired LED module(s)
- Unless instructed, Do Not touch any part of the LED module(s) as any unnecessary contact with the module could cause permanent damage
- Touch dimming

Technical Support: 1-855-855-8926

1. Remove fixture from its original package
2. Lock fixture rod (2d) into base (2e) with allen key and screw (2f)
3. Make low voltage connection (2g)
4. Secure cover (3a) to bottom of base (2e) with screws and screwdriver (3b)
5. Gently slide lamp head (3c) onto magnetic connector (3d)
6. Plug driver (3e) into outlet.



KUZCO

19054 28th Avenue Surrey, BC Canada V3Z 6M3  
T: 604 538 7162 TF: 1-855 85 KUZCO F: 604 538 7196  
W: kuzcolighting.com  
20191230