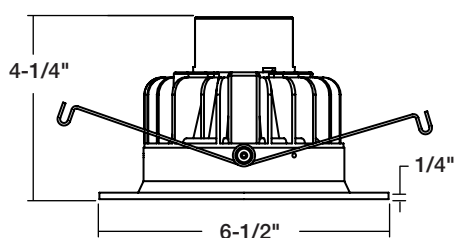
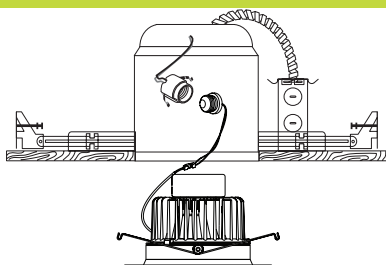




DIMENSION



INSTALLATION



Socket adapter removes from module, allowing installation to be quick and easy. Simply screw in the adapter and plug in the module. Turning off the entire module is not required.

Utilizes industry standard V or torsion springs, installs in most 5" incandescent downlights. Insert torsion springs into can and press trim to ceiling. Friction blades are included for alternate mounting. You MUST seal all gaps between the ceiling and fixture with weatherproof silicone sealant. This deters moisture and water from damaging fixtures and other mechanical ceiling elements.



CERTIFICATIONS

- RoHS
- IECC
- LM97/LM80
- California Title 24
- New York state
- Washington state
- Made in USA
- TUV Safety Tested

UNIQUELY ENGINEERED FOR NEW AND EXISTING CONSTRUCTION

The Elite **LED Module** has been engineered for new construction where Title-24's 'No Edison Socket' mandate has been initiated. A dedicated housing installs the same as any other Elite Lighting product and features our adjustable, lockable and tiltable nail bars. The **LED Module** can also be installed into most 5" incandescent downlights by using our unique Edison adapter.

Over 900 usable lumens are directed from the luminaire to the work surface. Lighting is smooth and comfortable, all while using 75% less energy than the equivalent 65W BR30 & 75W BR30 and 25% less than the common 18W & 26W CFL. Plus the Elite **LED Module** features 50,000hrs of life, and California Title-24 compliance.

INPUT VOLT.	INPUT FREQ.	THD	POWER FACTOR	INPUT POWER	LUMENS
120 / 277 (LD5 Only)	50/60Hz	<20%	>0.9	12W (+/-5%)	650
120 / 277 (LD5 Only)	50/60Hz	<20%	>0.9	16W (+/-5%)	900

FEATURES

Greater light output than an 18W & 26W CFL or a 65W BR30 & 75W BR30 while consuming less than 12W and 16W of power.

OPTICS

The Elite RL522 LED Module system is much more than just a simple LED retrofit. The Elite LED system is a highly engineered work of design and optical science which produces over 900 lumens! Our meticulously crafted optics gather the light scattered by the LED chip and shape it into a functional beam with uniform light distribution. The reflector also offers the benefits of a smooth integrated light with glare reduction at a 55 degree cut-off, which minimizes brightness. Optic combinations available in Baffle, Reflector, and Wall Wash options to fit any lighting application.

DURABILITY

Die-cast aluminum housing and heat management system are engineered for extremely long life and service period. Without proper heat management, any LED luminaire will fail. Our die-cast system pulls the heat from the LED chip, allowing the continued cool operation for years. Life tests have shown the Elite **LED Module** light output will be maintained at 70% of initial at 50,000 hours of operation. Our superior design allows for installation in construction that requires the Elite Air-Shut™ system. Our LED driver is rated for 50 to 60 Htz at 120V input, produces less than 10% THD, has a power factor between 0.90 and 1.00 and is thermal protected for additional safety.

REPEATABLE

Repeatability means quality. From our chip selection process, to our driver, to the thermal management, the Elite LED Module is engineered for quality. All Elite LED luminaires are rated at 85+ and 90+ CRI and 27K, 30K, 35K, 40K and 50K, as rated and tested to LM-79 and LM-80 standards by a certified laboratory, and meets the California Title-24 compliance standards. Elite's highly selective LED chips produce zero ultraviolet and virtually no infrared light.

DIMMABLE

The Elite **LED Module** system is fully dimmable down to 10% of initial light output with a Triac dimmer when ordered with the following options (DIMTR-120). The Elite LED 16W driver is dimmable down to 10% of initial light output by using a 0-10V dimmer and specified with the following options (DIM10-MVOLT).

INTERCHANGEABLE

The Elite 900 Lumen **LED Module** system works in our dedicated (LD5IC-AT, LD5RIC-AT, LD5-AT, LD5R-AT) housings and our existing 5" incandescent housings (or standard B5, B5R, B5IC-AT and B5RIC-AT - 120V Only) but is also suitable for use in most 5" recessed downlight housing. The Elite 900 Lumen **LED Module** system works in our Non-IC dedicated (LD5-AT, LD5R-AT - 120V to 277V) housing & our existing 5" incandescent Non-IC housing (B5, B5R).

ADAPTABLE

All Elite **LED Module** luminaires are shipped standard with our custom engineered Edison adapter. This adapter assembly allows the luminaires to install directly into existing Elite 5" downlight housings and most other 5" downlight housings.

OUR WORD

The Elite LED lighting system carries a five-year carefree warranty for parts and components. (Labor not included)

LED

5"

5 INCH LED RETROFIT MODULE

RL522

5" LED RETROFIT DIE-CAST ALUMINUM LENSED REFLECTOR WALL WASH

R30 Lamp



Before

RL522 LED Retrofit Series



After

Elite's innovative LED retrofit downlight modules deliver the brightest, most beautiful and most energy efficient ambient lighting to replace any lamp type on your existing fixture.

Example: **RL522-650L-DIMTR-120-30K-90-W-WH-WH**

Lumens may vary based on the trim type and color. See IES files for actual output lumens.

TYPE	650L SERIES	900L SERIES	CCT	CRI	FINISH		WALL WASH COVER	OPTION
RL522 (Reflector Wall Wash)	<input type="checkbox"/> 650L-DIMTR-120 <input type="checkbox"/> 650L-277 (Non Dimmable)	<input type="checkbox"/> 900L-DIMTR-120 <input type="checkbox"/> 900L-DIM10-MVOLT <input type="checkbox"/> 900L-277 (Non Dimmable)	<input type="checkbox"/> 27K <input type="checkbox"/> 30K <input type="checkbox"/> 35K <input type="checkbox"/> 40K <input type="checkbox"/> 50K (CRI 85+ Only)	<input type="checkbox"/> 85+ <input type="checkbox"/> 90+	<input type="checkbox"/> CL-WH <input type="checkbox"/> W-WH <input type="checkbox"/> BZ-BZ <input type="checkbox"/> SN-SN <input type="checkbox"/> RG-WH <input type="checkbox"/> MB-WH	<input type="checkbox"/> CL-CH <input type="checkbox"/> CP-CP <input type="checkbox"/> MB-BK <input type="checkbox"/> CL-BK <input type="checkbox"/> CL-SN <input type="checkbox"/> SHZ-WH	<input type="checkbox"/> WH <input type="checkbox"/> SN	<input type="checkbox"/> GU24SA GU24 SOCKET ADAPTER

Ordering Guide for Compatible Housing

IC - New Construction	Non-IC New Construction	IC - For Remodel	Non-IC For Remodel
LD5IC-AT	LD5-AT	LD5RIC-AT	LD5R-AT
HLD5IC-AT	HLD5-AT	HLD5RIC-AT	HLD5R-AT
B5IC-AT	B5-AT	B5RIC-AT	B5R-AT
B25IC-AT		B25RIC-AT	

RECOMMENDED DIMMERS FOR ELITE -RL522

LUTRON DIMMERS			
DIMTR		DIM10	DIMELV
Diva DVCL-153P Skylark CTCL-153P Nova N-600 NovaT NT-600 Skylark S-600 Ariadni AY-600P Nova NTLV-600 Nova NLV-600	Maestro MRF2-6ND NovaT NTELV-600 Diva DVELV-300P Skylark SELV-300P Nova NELV-450	Nova NFTV NovaT NTFTV Diva DDTV Diva DVSTV	NovaT NTELV-600 Diva DVELV-300P Skylark SELV-300P

LEVITON DIMMERS		
DIMTR	DIM10	DIMELV
IlumaTech IPE04	AWSMT-7DW AWSMG-7DW AMRMG-7DW Leviton Centura IlumaTech IP7 Series	IlumaTech IPE04

RL522-900L-DIMTR-120-40K-W-WH

INPUT WATTS: 15.8

LUMENS: 591

CRI: 85+

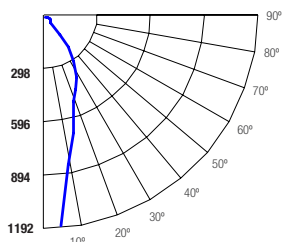
EFFICACY: 37

CCT: 4000K

TEST NO.: EL-101311

SPACING CRITERIA: 0.52

Candle Power Distribution (Candelas)



Zonal Lumens Summary

Zone	Lumens	%Lamp	%Fixt
0-20	238.01	N.A.	40.30
0-30	363.12	N.A.	61.50
0-40	463.38	N.A.	78.50
0-60	544.38	N.A.	92.20
0-80	584.54	N.A.	99.00
0-90	590.56	N.A.	100.00

Luminance (Average candela/M²)

Angle in Degrees	Average 0°	Average 45°	Average 90°
45	14830	11069	4889
55	6835	6152	4151
65	8355	6765	4244
75	9737	9186	4283
85	10177	9589	458

Lumens Per Zone

Zone	Lumens
0-10	89.48
10-20	148.53
20-30	125.11
30-40	100.26
40-50	52.09
50-60	28.91
60-70	23.54
70-80	16.61
80-90	6.02

Candela Tabulation

0	1	2	3	4	5	6	7	8	9
0	1192.45								
5	1097.58								
15	629.81								
25	417.98								
35	285.18								
45	128.74								
55	48.13								
65	43.35								
75	30.94								
85	10.89								
90	0.86								

Coefficients of Utilization - Zonal Cavity Method

Effective Floor Cavity Reflectance 0.20

	RC	80%				70%				50%				30%				10%				0%
	RW	70%	50%	30%	10%	70%	50%	30%	10%	50%	30%	10%	50%	30%	10%	50%	30%	10%	0%			
ROOM CAVITY RATIO	0	119	119	119	119	116	116	116	116	111	111	111	106	106	106	102	102	102	100			
	1	112	109	106	103	110	107	104	101	102	100	98	99	97	95	95	94	92	91			
	2	105	100	95	91	103	98	94	90	95	91	88	92	89	86	89	86	84	82			
	3	99	92	86	82	97	91	85	81	88	83	80	85	82	78	83	80	77	76			
	4	94	85	79	74	92	84	78	74	82	77	73	80	76	72	78	74	71	70			
	5	89	80	73	69	87	79	73	68	77	72	68	75	71	67	74	70	66	65			
	6	84	75	68	64	83	74	68	63	72	67	63	71	66	62	70	65	62	60			
	7	80	70	64	59	79	70	63	59	68	63	59	67	62	58	66	61	58	57			
	8	76	66	60	56	75	66	60	55	65	59	55	64	59	55	63	58	55	53			
	9	73	63	57	52	72	62	56	52	61	56	52	60	55	52	60	55	52	50			
10	70	60	54	50	69	59	53	50	58	53	49	58	53	49	57	52	49	48				

RC - Ceiling Cavity Reflectance

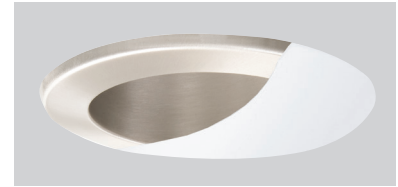
RW - Wall Reflectance

**W-W-WH**

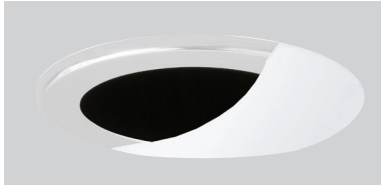
White- White- White

**CL-W-WH**

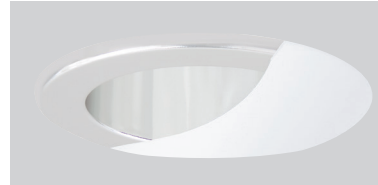
Clear- White- White

**SN-SN-WH**

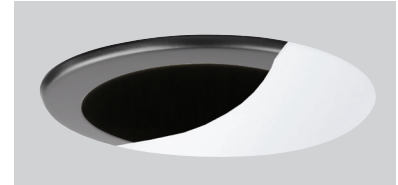
Satin Nickel- Satin Nickel- White

**CL-BK-WH**

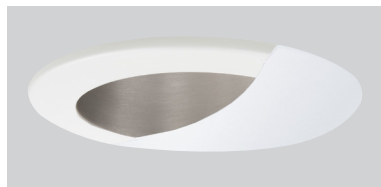
Clear -Black -White

**CL-CH-WH**

Clear -Chrome -White

**MB-BK-WH**

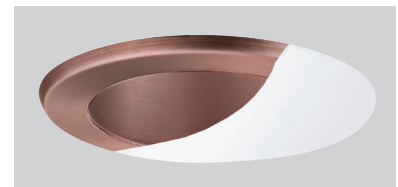
Black- Black- White

**SHZ-W-WH**

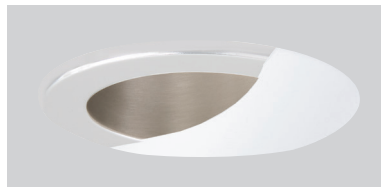
Satin Haze- White- White

**RG-W-WH**

Gold- White- White

**BZ-BZ-WH**

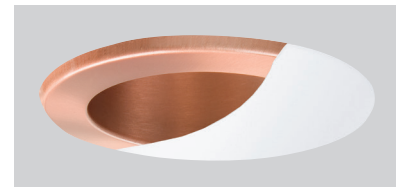
Bronze- Bronze- White

**CL-SN-WH**

Clear -Satin Nickel -White

**MB-W-WH**

Black- White- White

**CP-CP-WH**

Copper- Copper- White

RL522-650L-DIMTR-120-40K-W-WH

INPUT WATTS: 13.5

LUMENS: 505

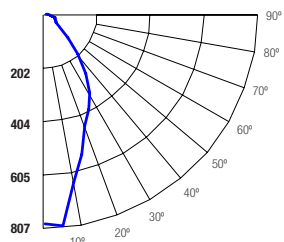
CRI: 85+

EFFICACY: 37

CCT: 4000K

TEST NO.: EL-101307

SPACING CRITERIA: 0.62

Candle Power Distribution (Candelas)

Cone of Light		
4.0	49.7 fc	3.1 ft
8.0	12.4 fc	6.1 ft
12.0	5.52 fc	9.2 ft
16.0	3.11 fc	12.3 ft
20.0	1.99 fc	15.3 ft
24.0	1.38 fc	18.4 ft
Distance to Plane	Initial Footcandle at Nadir	Beam diameter

BEAM DIA. MEASURED AT 50% OF NADIR F.C.

Zonal Lumens Summary

Zone	Lumens	%Lamp	%Fixt
0-20	167.70	N.A.	33.20
0-30	283.21	N.A.	56.10
0-40	381.34	N.A.	75.50
0-60	462.05	N.A.	91.50
0-80	499.42	N.A.	98.90
0-90	504.89	N.A.	100.00

Luminance (Average candela/M²)

Angle in Degrees	Average 0°	Average 45°	Average 90°
45	14513	11023	5252
55	6892	6077	4145
65	7977	6362	3988
75	8979	8381	3849
85	9290	8673	402

Lumens Per Zone

Zone	Lumens
0-10	58.51
10-20	109.19
20-30	115.51
30-40	98.12
40-50	52.34
50-60	28.37
60-70	22.15
70-80	15.23
80-90	5.46

Candela Tabulation

0	Q
0	794.95
5	807.27
15	548.99
25	399.81
35	273.77
45	125.99
55	48.53
65	41.39
75	28.53
85	9.94
90	0.65

Coefficients of Utilization - Zonal Cavity Method

Effective Floor Cavity Reflectance 0.20

	RC	80%				70%				50%				30%				10%				0%
	RW	70%	50%	30%	10%	70%	50%	30%	10%	50%	30%	10%	50%	30%	10%	50%	30%	10%	0%			
ROOM CAVITY RATIO	0	119	119	119	119	116	116	116	116	111	111	111	106	106	106	102	102	102	100			
	1	112	108	105	102	106	103	103	101	102	100	97	98	96	95	95	93	92	90			
	2	105	99	94	89	102	97	92	88	94	90	86	90	87	85	88	85	83	81			
	3	98	90	84	80	96	89	83	79	86	82	78	84	80	76	81	78	75	73			
	4	92	83	77	72	90	82	76	71	80	75	70	78	73	70	76	72	69	67			
	5	87	77	71	65	85	76	70	65	74	69	65	73	68	64	71	67	63	62			
	6	82	72	65	60	81	71	65	60	70	64	59	68	63	59	67	62	59	57			
	7	78	67	60	56	76	67	60	55	65	59	55	64	59	55	63	58	55	53			
	8	74	63	56	52	72	62	56	52	61	56	51	60	55	51	59	54	51	49			
	9	70	59	53	48	69	59	53	48	58	52	48	57	52	48	56	51	48	46			
10	67	56	50	45	66	56	49	45	55	49	45	54	49	45	53	48	45	43				

RC - Ceiling Cavity Reflectance

RW - Wall Reflectance