

RADIUS XL BUNDLE

Aluminum Tape Light Extrusion Bundle

This easy to install extrusion is designed to direct the light where you want it to go. Simple yet versatile, the Radius XL can be installed in 90 degree corners and is perfect for undercabinet applications. Surface mount using the aluminum mounting clips.

- Made of lightweight double anodized aluminum
- Maximum recommended wattage per foot of tape light < 6.9W/ft (23W/M)
- Frosted, UV & flame resistant lens protects light source while evenly diffusing light
- Field cuttable lens and extrusion
- Aluminum provides excellent heat dissipation
- Compatible with most Trulux tape light

Available Finishes

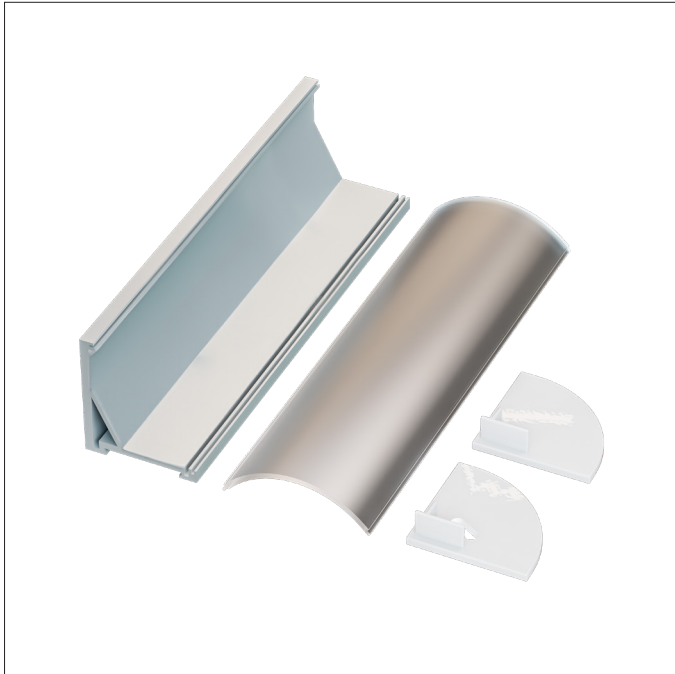


Anodized Aluminum

Compatible Tape Light

- Single Color (10mm) + HD Connectors
- Tunable CCT (10mm) + HD Connectors
- RGBW / RGBTW (12mm) + HD Connectors

PROJECT:
TYPE:
LOCATION:
CATALOG NUMBER:



RADIUS XL BUNDLE ORDERING INFORMATION

ITEM NUMBER	DESCRIPTION
PLX-EXTRADXL-2M-BNDL1	2M Radius XL Single Bundle Includes: (1) 2M Radius XL Extrusion in Aluminum Finish, (1) 2M High Grade Diffusion Lens, (1) End Cap w/ Hole, (1) End Cap w/o Hole, (6) Mounting Clips, (1) 180° Splicing Strip

RADIUS XL DIMENSIONS

