

RADIUS BUNDLE

Aluminum Tape Light Extrusion Bundle

This easy to install extrusion is designed to direct the light where you want it to go. The rounded lens diffuses the light nicely. Simple yet versatile, the Radius can be installed in 90 degree corners and is perfect for undercabinet applications. Surface mount using the aluminum mounting clips.

- Made of lightweight double anodized aluminum
- Maximum recommended wattage per foot of tape light < 5.7W/ft (19W/M)
- Frosted, UV & flame resistant lens protects light source while evenly diffusing light
- Field cuttable lens and extrusion
- Aluminum provides excellent heat dissipation
- End caps included for a tailored look
- Compatible with most Trulux tape light

Available Finishes

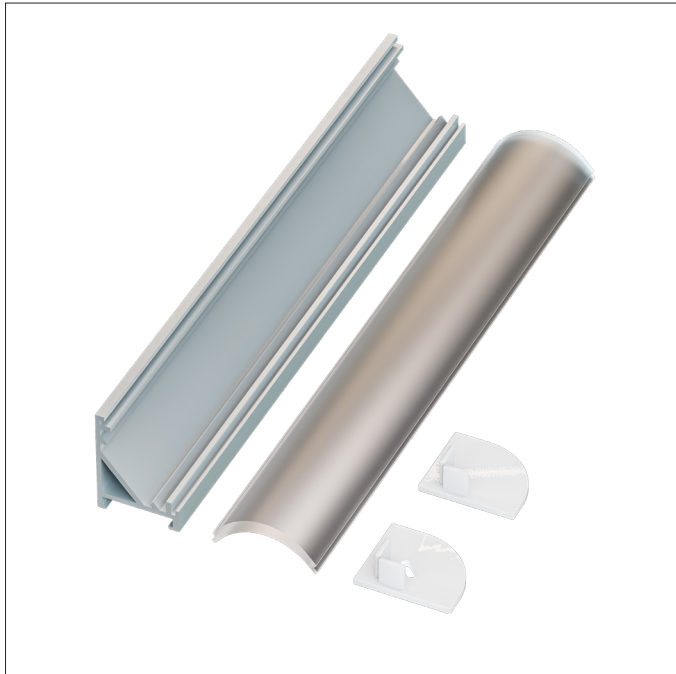


Anodized Aluminum

Compatible Tape Light

- Single Color (10mm)
- Tunable CCT (10mm)
- RGBW / RGBTW (12mm)

PROJECT:
TYPE:
LOCATION:
CATALOG NUMBER:



RADIUS BUNDLE ORDERING INFORMATION	
ITEM NUMBER	DESCRIPTION
PE-RAD-2M-BNDL1	2M Radius Single Bundle Includes: (1) 2M Radius Extrusion in Aluminum Finish, (1) 2M High Grade Diffusion Lens, (1) End Cap w/ Hole, (1) End Cap w/o Hole, (6) Mounting Clips, (1) 180° Splicing Strip

RADIUS DIMENSIONS

