

# BEVEL 28 BUNDLE

## Recessed Mount Extrusion Bundle

The Bevel 28 is a traditional recessed mount extrusion with a twist. It features an 28° angle mounting surface for tape light, shining light in a specific direction. It is perfect for sophisticated task lighting and accent lighting situations.

- Compatible with 10mm Trulux tape light models
- Maximum recommended wattage per foot of tape light < 3.6W/ft (12W/M)
- Angled profile for directional illumination
- Frosted, UV & flame resistant lens protects light source while evenly diffusing light
- Anodized aluminum provides excellent heat dissipation
- Field cuttable extrusion and lens
- Compatible with 10mm wide tape light
- Pressure-fit installation

### Available Finishes



Anodized Aluminum

### Compatible Tape Light

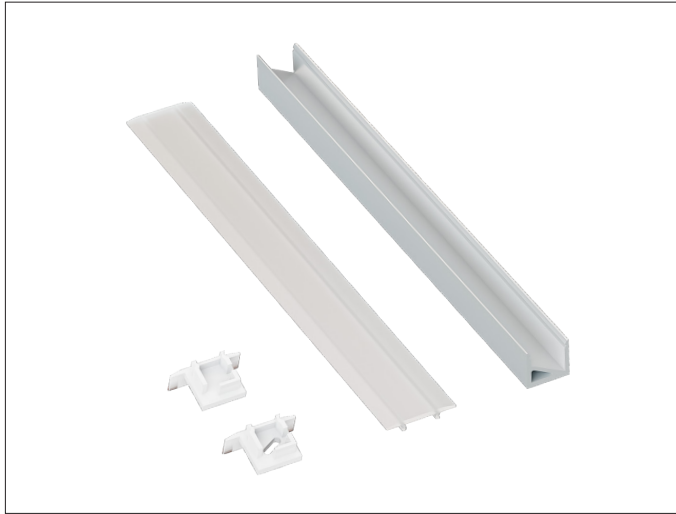
- Single Color (10mm)
- Tunable CCT (10mm)

PROJECT:

TYPE:

LOCATION:

CATALOG NUMBER:



### BEVEL 28 BUNDLE ORDERING INFORMATION

ITEM NUMBER	DESCRIPTION
PE-B28-2M-BNDL1	2M Bevel 28 Single Bundle Includes: (1) 2M Bevel 28 Extrusion, (1) 2M High Grade Diffusion Lens, (1) End Cap w/ Hole, (1) End Cap w/o Hole

### BEVEL 28 DIMENSIONS

