

# ARC BUNDLE

## Aluminum Tape Light Extrusion Bundle

Perfect for in-wall accent lighting, the Arc's design which allows two strips of white or color changing tape light for more intense accents when needed. The concave design reflects the light providing a diffused light without seeing the light source or dotting.

- Made of lightweight double anodized aluminum
- Maximum recommended wattage per foot of tape light < 9W/ft (30W/M)
- Frosted, UV & flame resistant lens protects light source while evenly diffusing light
- Choose between single or dual-run tape
- Field cuttable lens and extrusion
- Aluminum provides excellent heat dissipation
- End caps included for a tailored look
- Compatible with most Trulux tape light

### Available Finishes

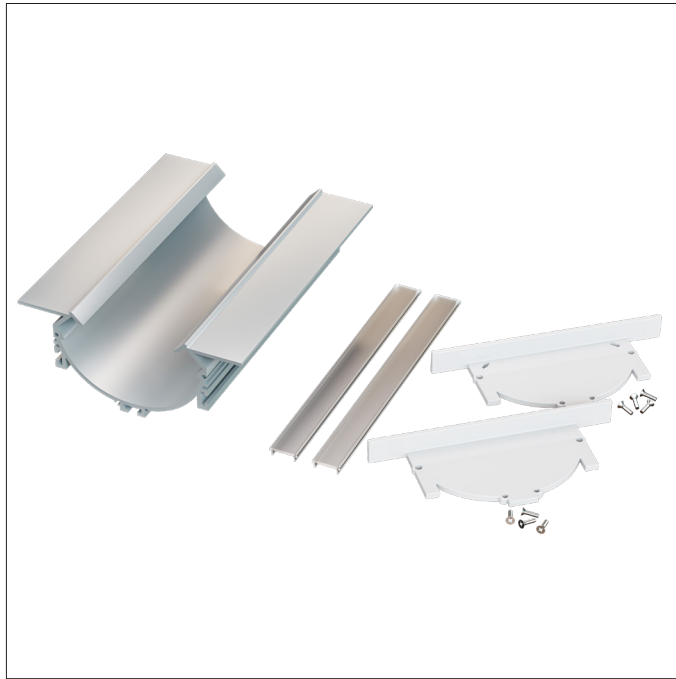


Anodized Aluminum

### Compatible Tape Light

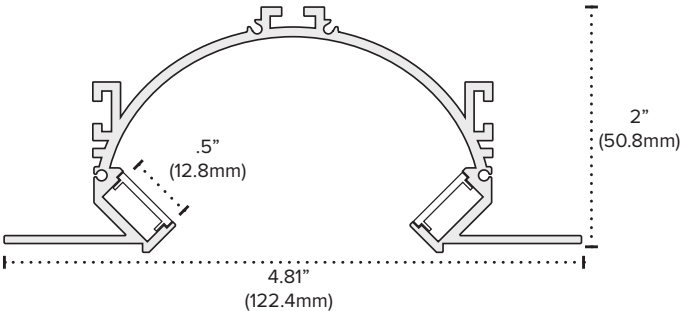
- Single Color (10mm)
- Tunable CCT (10mm)
- RGBW / RGBTW (12mm)

PROJECT:
TYPE:
LOCATION:
CATALOG NUMBER:



ARC BUNDLE ORDERING INFORMATION	
PE-ARC-2M-BNDL1	2M Arc Single Bundle Includes: (1) 2M Arc Extrusion, (2) 2M High Grade Diffusion Lens, (1) End Cap w/ Hole, (1) End Cap w/o Hole, (6) Mounting Clips, (1) 180° Splicing Strip

### ARC DIMENSIONS



# ARC BUNDLE

## Aluminum Tape Light Extrusion Bundle

Perfect for in-wall accent lighting, the Arc's design which allows two strips of white or color changing tape light for more intense accents when needed. The concave design reflects the light providing a diffused light without seeing the light source or dotting.

- Made of lightweight double anodized aluminum
- Maximum recommended wattage per foot of tape light < 9W/ft (30W/M)
- Frosted, UV & flame resistant lens protects light source while evenly diffusing light
- Choose between single or dual-run tape
- Field cuttable lens and extrusion
- Aluminum provides excellent heat dissipation
- End caps included for a tailored look
- Compatible with most Trulux tape light

### Available Finishes

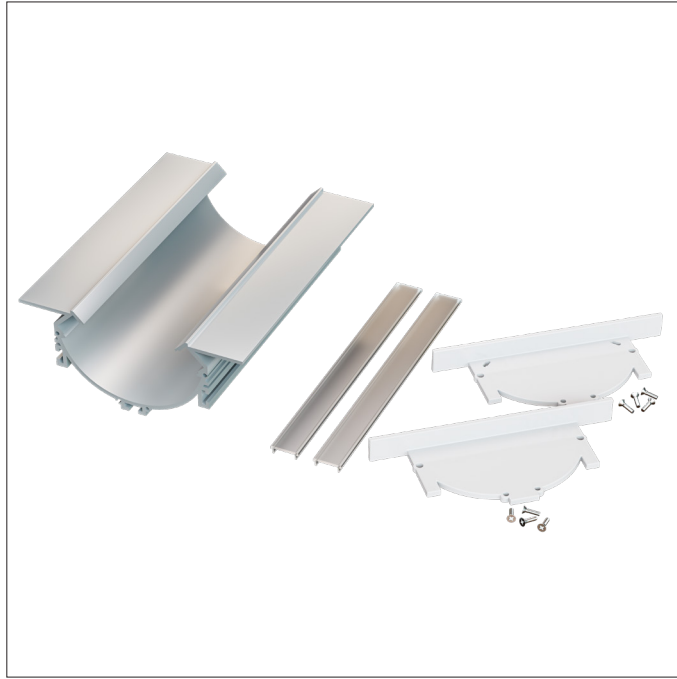


Anodized Aluminum

### Compatible Tape Light

- Single Color (10mm)
- Tunable CCT (10mm)
- RGBW / RGBTW (12mm)

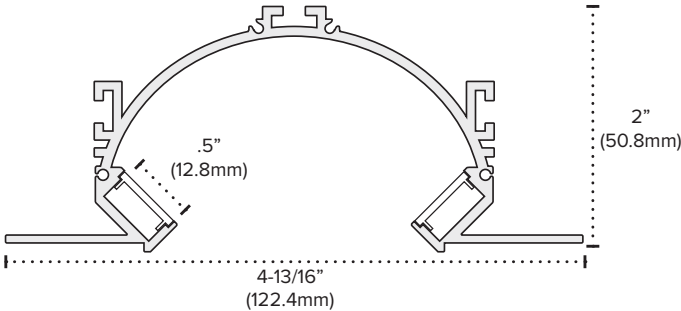
PROJECT:
TYPE:
LOCATION:
CATALOG NUMBER:



### ARC BUNDLE ORDERING INFORMATION

PLX-EXTARC-2M-BNDL1	2M Arc Single Bundle Includes: (1) 2M Arc Extrusion, (1) 2M High Grade Diffusion Lens, (1) End Cap w/ Hole, (1) End Cap w/o Hole, (6) Mounting Clips, (1) 180° Splicing Strip
---------------------	--

### ARC DIMENSIONS



ARC BUNDLE

Aluminum Tape Light Extrusion Bundle

Perfect for in-wall accent lighting, the Arc's design which allows two strips of white or color changing tape light for more intense accents when needed. The concave design reflects the light providing a diffused light without seeing the light source or dotting.

- Made of lightweight double anodized aluminum
- Maximum recommended wattage per foot of tape light < 9W/ft (30W/M)
- Frosted, UV & flame resistant lens protects light source while evenly diffusing light
- Choose between single or dual-run tape
- Field cuttable lens and extrusion
- Aluminum provides excellent heat dissipation
- End caps included for a tailored look
- Compatible with most Trulux tape light

Available Finishes

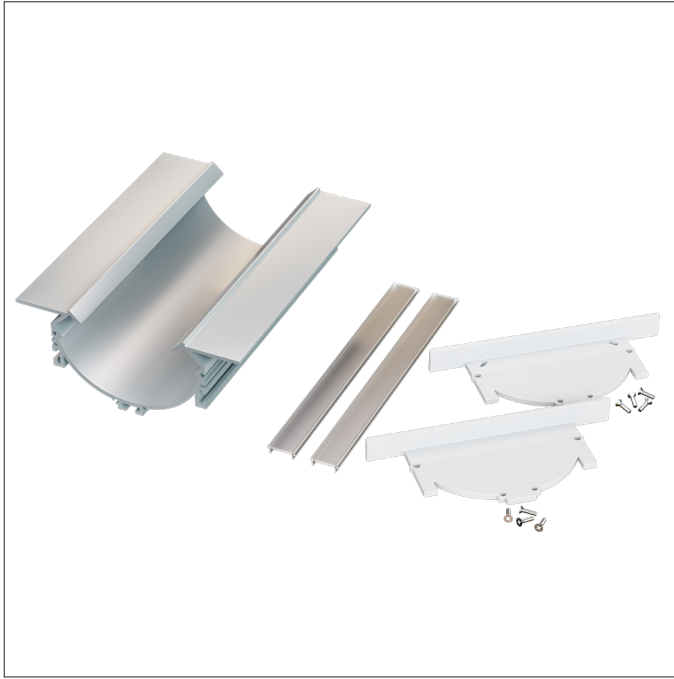


Anodized Aluminum

Compatible Tape Light

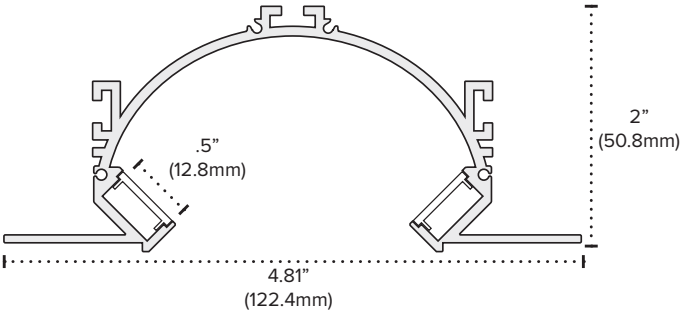
- Single Color (10mm)
- Tunable CCT (10mm)
- RGBW / RGBTW (12mm)

PROJECT:
TYPE:
LOCATION:
CATALOG NUMBER:



ARC BUNDLE ORDERING INFORMATION	
PZM-EXTARC-2M-BNDL1	2M Arc Single Bundle Includes: (1) 2M Arc Extrusion, (2) 2M High Grade Diffusion Lens, (1) End Cap w/ Hole, (1) End Cap w/o Hole, (6) Mounting Clips, (1) 180° Splicing Strip

ARC DIMENSIONS



# ARC BUNDLE

## Aluminum Tape Light Extrusion Bundle

Perfect for in-wall accent lighting, the Arc's design which allows two strips of white or color changing tape light for more intense accents when needed. The concave design reflects the light providing a diffused light without seeing the light source or dotting.

- Made of lightweight double anodized aluminum
- Maximum recommended wattage per foot of tape light < 9W/ft (30W/M)
- Frosted, UV & flame resistant lens protects light source while evenly diffusing light
- Choose between single or dual-run tape
- Field cuttable lens and extrusion
- Aluminum provides excellent heat dissipation
- End caps included for a tailored look
- Compatible with most Trulux tape light

### Available Finishes

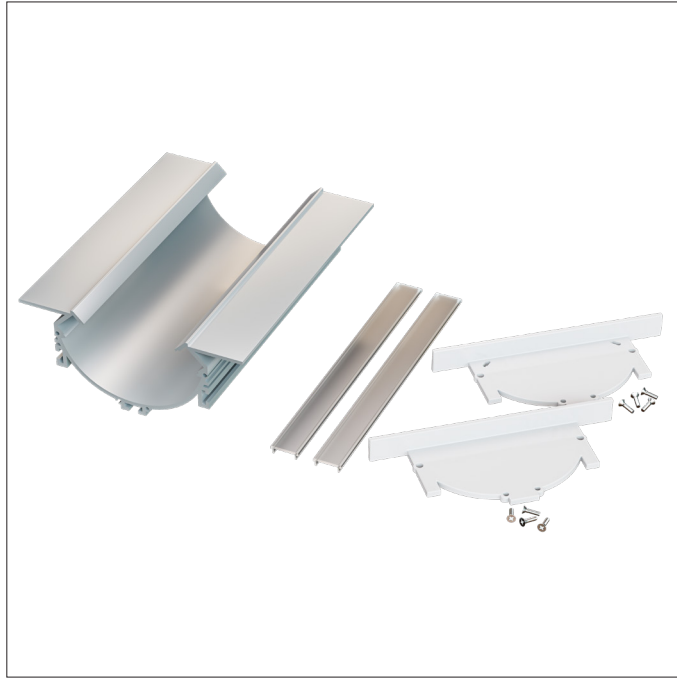


Anodized Aluminum

### Compatible Tape Light

- Single Color (10mm)
- Tunable CCT (10mm)
- RGBW / RGBTW (12mm)

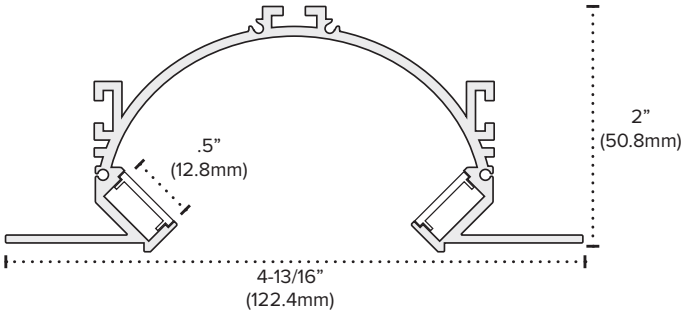
PROJECT:
TYPE:
LOCATION:
CATALOG NUMBER:



### ARC BUNDLE ORDERING INFORMATION

PLX-EXTARC-2M-BNDL1	2M Arc Single Bundle Includes: (1) 2M Arc Extrusion, (2) 2M High Grade Diffusion Lens, (1) End Cap w/ Hole, (1) End Cap w/o Hole, (6) Mounting Clips, (1) 180° Splicing Strip
---------------------	--

### ARC DIMENSIONS



ARC BUNDLE

Aluminum Tape Light Extrusion Bundle

Perfect for in-wall accent lighting, the Arc's design which allows two strips of white or color changing tape light for more intense accents when needed. The concave design reflects the light providing a diffused light without seeing the light source or dotting.

- Made of lightweight double anodized aluminum
- Maximum recommended wattage per foot of tape light < 9W/ft (30W/M)
- Frosted, UV & flame resistant lens protects light source while evenly diffusing light
- Choose between single or dual-run tape
- Field cuttable lens and extrusion
- Aluminum provides excellent heat dissipation
- End caps included for a tailored look

Available Finishes

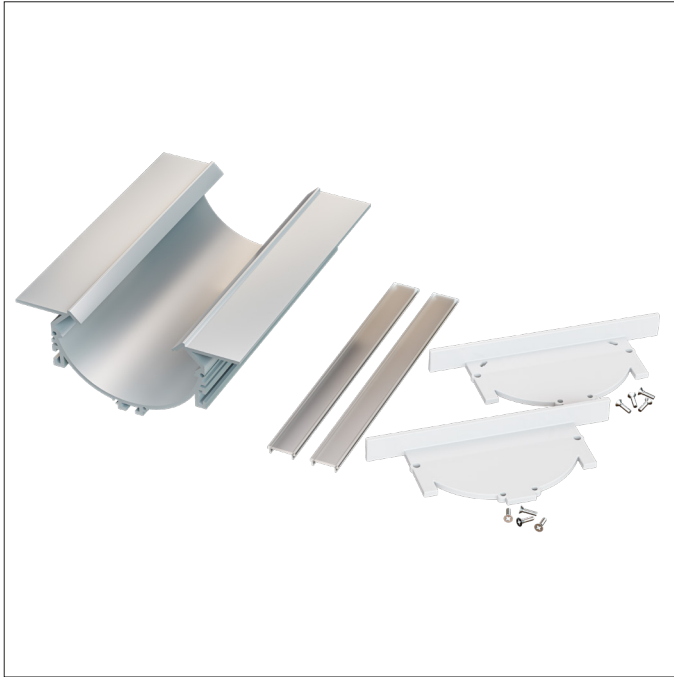


Anodized Aluminum

Compatible Tape Light

- Single Color (10mm)
- Tunable CCT (10mm)
- RGBW / RGBTW (12mm)

PROJECT:
TYPE:
LOCATION:
CATALOG NUMBER:



ARC BUNDLE ORDERING INFORMATION	
PZM-EXTARC-2M-BNDL1	2M Arc Single Bundle Includes: (1) 2M Arc Extrusion, (2) 2M High Grade Diffusion Lens, (1) End Cap w/ Hole, (1) End Cap w/o Hole, (6) Mounting Clips, (1) 180° Splicing Strip

ARC DIMENSIONS

